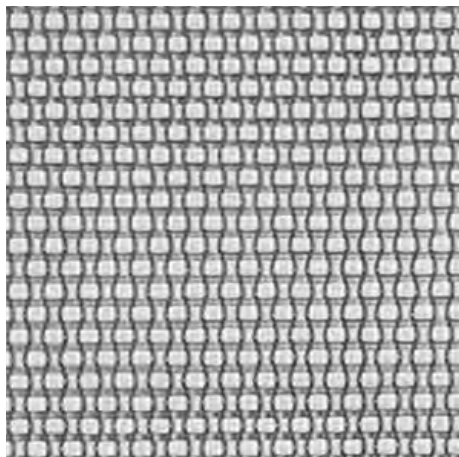
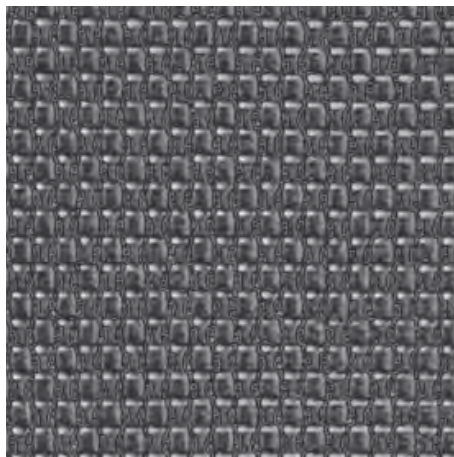


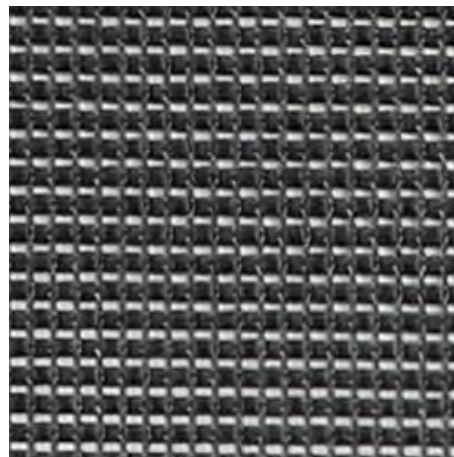
BACKREST COLORS



Kate White



Kate Charcoal

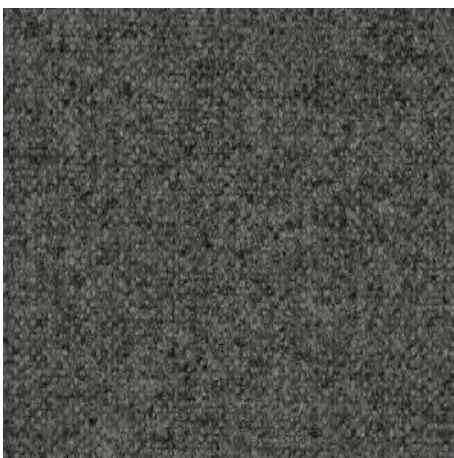


Kate Black

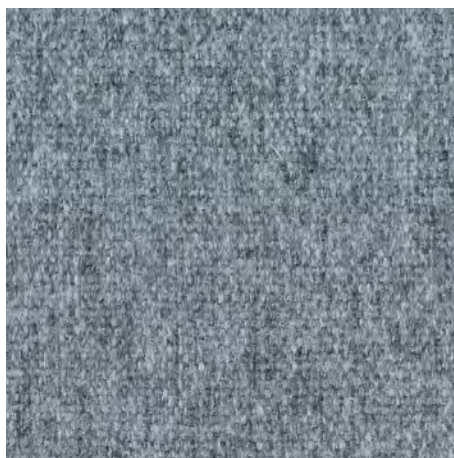
SEAT COLORS



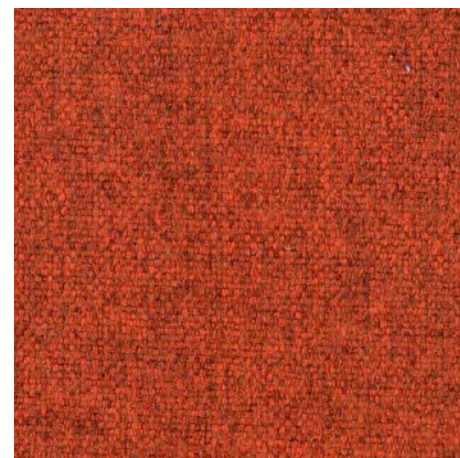
Dorset Silver



Dorset Charcoal



Dorset Sea



Dorset Cayenne

poppin.

Maxwell Upholstery Fabric

MAXWELL UPHOLSTERY FABRIC DETAILS

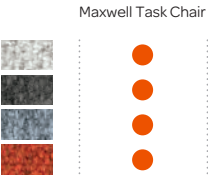
BACKREST:

- Content:** 64% polyester + 36% polyelastomer
- Abrasion Resistance:** ISO 12947-2:2016 Martindale Method, above 100,000 cycles
- Weight:** 518g/linear meter
- Color Fastness to Light:** AATCC16A-2014: Class 4.5 @ 40 hrs
- Color Fastness to Rub:** AATCC 8-2016, Class 4.5 Dry/Class 4.5 Wet
- Pilling Resistance:** ISO 12945-2:2020 Martindale Method, Class 4
- Flammability Resistance:** TB-117-2013

SEAT:

- Content:** 100% Polyester
- Abrasion Resistance:** ASTM D4157 Wyzenbeek 55,000 cycles
- Weight:** 17.28 oz./yard (= 536g per linear meter)
- Color Fastness to Light:** AATCC16A: Class 4 @ 40 hrs
- Color Fastness to Rub:** AATCC 8, Class 4 Dry/Class 3 Wet
- Pilling Resistance:** ASTM D3511, Class 4
- Flammability Resistance:** TB-117, UFAC Class 1, NFPA 260 Class 1, ASTM E-84 Class 1
- Unique Performance:** LiveSmart moisture repellency and stain resistance

Availability:



Subject to slight variations in color.

ABOUT POPPIN

Poppin's office products and furniture are designed for the dynamic needs of the changing workspace. With beautiful design, transparent pricing, and a dedicated Workstylist by your side, Poppin makes it effortless and affordable to achieve your vision.

100% WORK HAPPINESS GUARANTEED.

For full warranty details, visit poppin.com

Availability as of August 2021.
For the latest, use the QR Code.



poppin.
work happy.

FLAGSHIP SHOWROOM
16 Madison Square West, 3rd Fl
New York, NY 10010

FOR MORE LOCATIONS, VISIT
poppin.com/showrooms

(888) 676-7746
sales@poppin.com
[#poppin](https://www.instagram.com/poppin) [#workhappy](https://www.facebook.com/poppin)

©Poppin 2021

